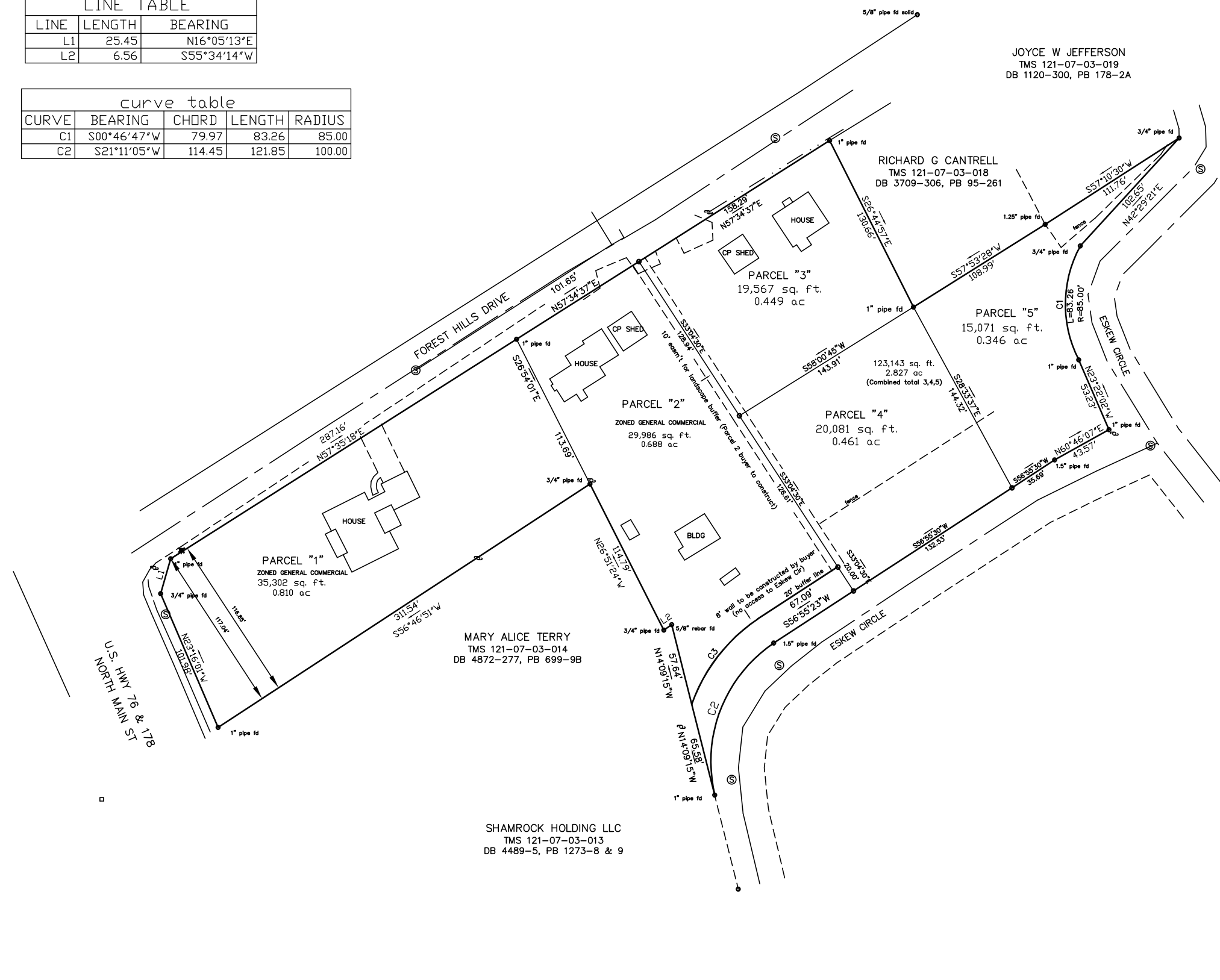


LINE TABLE		
LINE	LENGTH	BEARING
L1	25.45	N16°05'13"E
L2	6.56	S55°34'14"W

curve table				
CURVE	BEARING	CHORD	LENGTH	RADIUS
C1	S00°46'47"W	79.97	83.26	85.00
C2	S21°11'05"W	114.45	121.85	100.00

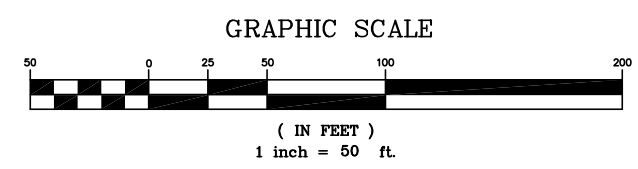
ref: LINDA LOCKABY etal
TMS 121-07-03-015
DB 2866-135, PB 79-39



location map n-t-s

Legend:
IP/F/S = Iron Pin or Pipe Found/Set,
RR = Railroad Spike, N/C = Nail & Cap, P/K = P/K Nail
UP = Utility pole, LP = Light Pole, WM = Water Meter
MH = Manhole, SD = Storm Drain, UB = Utility Box
I hereby certify that to the best of my knowledge, information, and belief, the survey shown hereon was made in accordance with the requirements of the Minimum Standards Manual for the Practice of Land Surveying in South Carolina, and meets or exceeds the requirements for a Class "B" survey as specified therein. This house is not located in a current designated flood hazard area. This property is subject to any easements & restrictions on record.

John R Long SC PLS 6270



PRELIMINARY PLAT ONLY

plat for

J M MCLEOD	
ANDERSON COUNTY	SOUTH CAROLINA
CITY OF ANDERSON	OCTOBER 06, 2004
SCALE 1" = 50'	JOB # LD3-MCCELOD
JOHN R LONG & ASSOCIATES Registered Land Surveyors Anderson, SC 29633 Phone & Fax: 864-654-5033	
SURVEYING - GPS CONTROL - PLANNING	